

Williamson County Area Beekeepers Association

January 2018

NEXT MEETING:

Thursday, January 25, 2018
7:00-8:30: Beekeeping 101 / 201

First United Methodist Church
Georgetown (MMC bldg.)

Beekeeping 101: Laura Colburn

2018 Club Officers:

PRESIDENT: Jim Colbert
512-863-7183
colbertj@hotmail.com

VICE PRESIDENT:
Shannon Montez
shannon.montez@yahoo.com

MEMBERSHIP: Shirley Doggett
co chairs: Fred & Cecilia Richter
512-924-5051
sdoggett@mindspring.com

PROGRAM: Laura Colburn
512-751-6347
lcolburn0617@gmail.com

NEWSLETTER EDITOR:
Maryalice Herring
254-317-4247
maryaliceherring@aol.com

SECRETARY: Ginny Stubblefield
512-252-9954
ginny@options2sell.com

TREASURER: Phil Ainslie
254-718-3255
beeuser46@gmail.com

HISTORIAN: Jennifer Shear
512-507-7746
jennifer.shear@dell.com

LIBRARIAN: Barbi Rose
512-799-0616
barbirose@yahoo.com

REFRESHMENTS:
Sherry Smith, Jill Douglas,
Matt Ludlum, Leigh Ann Brunson,
Janine Hall

SCHOLARSHIP CHAIR:
Jimmie Oakley
512-507-3009
jimmie.oakley@gmail.com

QUEEN CHAIR:
Ginny Stubblefield
512-252-9954
ginny@options2sell.com

What to Expect Season by Season

By Laura Colburn, WCABA Program Officer

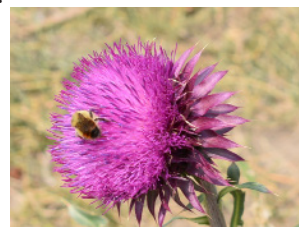
As we head into another year and look forward to either starting and splitting hives in spring or simply watching hives grow and produce, January is a good time to think about the biology of the hive and what to expect through the year.

Winter

Beginning in January, with ups and downs of temperatures, the workers are taking cleansing flights and searching for what little pollen they can find on warmer days. I saw a bit of white pollen going in the entrance recently when the temperature reached almost 80 degrees. When Mountain Cedar blooms, they'll collect that too. It doesn't have as much protein as spring and summer pollens, but they'll take what they can use. That red pollen is good for your allergies. On cold days, like the first few weeks of January were, with temperatures down into the teens, all the bees form a tight cluster and vibrate to keep warm. During this time, when the temperatures are erratic and the days are short, most queens are laying few eggs, so early January is a good time to treat for Varroa, because they are phoretic (living on adult bees) rather than protected in brood cells.

There is nothing you can do about a queenless hive or other brood problems in January, so don't do any inspections. Quickly check honey frames or feeders when the temperatures are above 55, but otherwise leave your hives alone.

In February and March, egg laying begins to increase and early season plants begin to produce pollen. However, this is also the time when hives are at their greatest risk of starvation. Their winter stores are beginning to dwindle but as the temperatures become warmer, but there isn't much pollen and nectar yet. Check your hives stores and make sure they have sufficient honey and pollen left and if not, feed sugar syrup and pollen patties, but only as much as they can consume in a week. Pollen patties can become breeding grounds for hive beetles.



Spring

In April and May, egg laying significantly increases and many forage sources are in full bloom: Bluebonnets, Agarita, Texas Persimmon, a variety of sages, Red Buds, and fruit trees, just to name a few. The bees have probably moved up from the bottom box into the top. Mid-April to early-May is a good time to reverse the boxes and cull old comb. You may need to continue feeding a 1:1 syrup to stimulate wax-building, especially if

continued on page 3

A Message From Our President

It is here!

Our first meeting of 2018 will be this Thursday at 7PM. I am looking forward to a great year with WCABA. We have a board of directors with some new faces and that means new ideas. I am looking forward to working with them in the coming year. Shirley, our membership chair, said we have many new members so far this year and I am looking forward to getting to know them as we move through the year. If you haven't renewed your membership, this is the time to do it. Only \$15 and the benefits are staggering. We also have a new Honey Queen, Jordan, who is doing a magnificent job of representing WCABA. If you haven't met her, take the time to introduce yourself. In addition to Jordan, we have 2 ambassadors, Michael and Sebastian. Please take the time to get to know these young men also. We are getting our scholarship program geared up again and I am excited about getting young, novice beekeepers involved.



We are in the last days of our bee procurement for 2018. We are able to offer 5-frame NUCs for \$150 and queens for \$32. If you have looked at prices this year, you know what a great deal this is. And don't forget, these prices include delivery to Georgetown.

If, like me, you find WCABA an organization that is both fun and educational, an organizations worthy of your time and money, perhaps you have energy and/or talents that can help us keep growing and improving. If so, why not get involved? There are many opportunities and you will be hearing about them in the coming months.

Yes, this is going to be a great year for WCABA and I am looking forward to a dynamic and active club membership. See you Thursday.

Jim



continued from page 1

you have several frames of foundation, but stop feeding when you see nectar being stored. You don't want sugar syrup in your honey stores. This is a tricky balancing act. You want to feed to help them build wax in the hive body and honey supers, but you don't want to feed so much that they store it.

Late spring into early summer is also when you should start or split hives. You want to give these new hives time to build up and be able to catch the summer nectar flow.

Summer

June says goodbye to cool temperatures and hello to lots of blooms: trees, shrubs, wildflowers, gardens are all bursting with pollen and nectar. Be sure to have honey supers on before this starts so you can catch all that wonderful nectar.

June is also a crucial time to watch for swarming behavior. Plenty of space and management of brood frames are both essential. Or you can let the swarm cells begin and make a split. This will give you a new hive and allow you to keep your mated queen. Remember it takes only 16 days for a queen cell to go from egg to emergence, so if you don't want to lose your mated queen in a swarm, check your hive about every 10 days. Once swarm cells have been started, it's very difficult to stop the hive's impulse to swarm.

July begins the wind-down of the nectar flow and brings us to the beginning of our second annual dearth when the weather is hot and dry and not as much forage is available. Honey frames that are capped can be harvested, but be sure to leave enough for your bees. You may see bearding on your hives on very hot days, when the bees crawl out to the landing board and front of the hive to fan air into the hive. This is another crucial time for Varroa monitoring. It may not seem like it, but to the bees fall is just around the corner and egg laying levels off but Varroa breeding continues.

Mid-September another nectar flow often occurs with fall wildflowers such as goldenrod. Many of the fall blooming plants provide a stronger, darker, and somewhat pungent nectar. If you want to keep your honey light and sweet, harvest before the fall flow.



Fall

October may be your last opportunity to count and treat for Varroa. Don't miss this opportunity because a hive infested in fall will probably not survive the winter.

During this time, if your hives don't have sufficient stores, switch to a 2:1 syrup.

November and December brings us back to a mix of cool and warm temperatures. Egg laying drastically reduces and the bees emerging now must live through the winter. It's essential the hive have enough pollen and honey to feed these winter bees. On cold days, the bees cluster tightly together. There are things you can observe during the winter months: stores in frames above the cluster; comings and goings on warmer days; the location of the cluster by pressing your ear to the hive body on cold days; condensation build up on inner cover. But leave the cluster alone during the winter. They put a lot of energy into forming it and keeping the cluster warm.

Watch your bees throughout the year to observe the changes in their habits from season to season. Plan and plant to help support them, paying extra attention to plants that produce pollen and/or nectar during hot, dry months. While you may not be able to provide all their foraging needs, the more they have closer to the hive, the longer the foragers will live because of reduced wear and tear that comes with long flights.



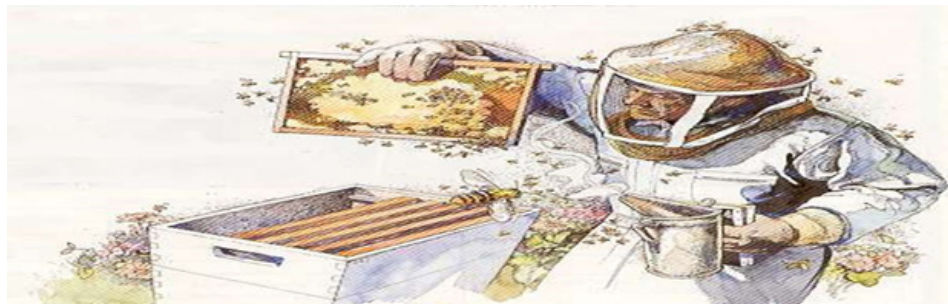
ADVISORY COUNCIL

Williamson County Area Beekeepers Association is revamping the former "Mentor Program".

This new program is for novice, new, and aspiring beekeepers to have a person to email, call, or possibly even come out to visit to help with any of your bee questions or concerns. You may be aspiring to become a beekeeper or starting your very first hive and you probably have many questions that come up in between our monthly meetings. Or, you attend the monthly meetings and there just isn't enough time to answer all our questions.

If you would like to have a mentor, please reach out to Jennifer Shear at jenshear@aol.com and she will pair you up with someone you can email or call to answer your questions. This program is a useful tool to help answer your questions about becoming a beekeeper, address any concerns you have about your new hive, and be your trusted advisor to help you become a successful Backyard Beekeeper. If a site visit is necessary that will be a decision between you and your mentor, but once a mentor is assigned please feel free to reach out with your questions or concerns.

Also, please ask to join our Facebook page, Williamson County Area Beekeepers Association, where we will post FAQ's, upcoming events, and just everyday good beekeeper information.



New Members:

*Jeff Cox - Georgetown

*Cean and Steve Embry - Florence

*Samantha Enders - Austin

*Amanda Lanahan - Hutto

Renewing Members:

*Wilbur Brinkmeyer

*Jim Colbert

*Benji Cox

*Brandon and Kristy Deaver

*Suzan Gibson

*Travis and Maureen Lane

*Terry White

*Terry and Lynn Wyatt

**Have you renewed your membership??
Join at the meeting or by mail.**



WCABA Library Takes Another Step Toward the Cloud!

Last year we introduced Librarika.com, the online version of browsing through library shelves and making reservations. It was received very well by participating members and has proven to help your librarian maintain our expanding library. This year we will use Librarika.com as our primary way to reserve books, which will let us reduce the volume of books traveling to and from the monthly meetings.

What are the benefits of using an online reservation system?

- * All of WCABA's 100+ books and DVDs are listed in Librarika.com and all are completely visible. (Items are visible even when they are checked out.)
- * There is a robust search feature that lets you find what you're looking for. (This is more efficient than shuffling through piles of books.)
- * Search through "New Arrivals" to see what's new. (More reliable than inspecting the spines.)
- * Book "shopping" and reserving can take place on your time schedule, at your own pace, wherever there is an internet connection. (Not just during intermission at our monthly meetings)
- * All items have a picture of the front cover for visual recognition
- * If something is checked out you can reserve it for a later month.
- * Go to "My Account" to see your reservations, check out history, and recently viewed items.
- * If you made a reservation, your items will be brought to the meeting so they can be officially checked out.
- * Automatic due date reminders.

Stop by the library table to get started with a Librarika.com account!

Barbi Rose

WCABA Librarian

Help Wanted!

I am looking for someone with an entrepreneurial spirit who likes bees to help me part time with my bee removal business in the Austin Metropolitan area.

If you are interested in details, please contact me - Randy Oakley

Oakley Honey Bee Removal

512-981-9216

LiveHoneyBeeRemoval@gmail.com

Educational Opportunity

2018 Austin Area Beekeeping Seminar

Austin Area Beekeepers Association

Saturday, January 27, 2018 from 9:00 AM to 5:00 PM (CST)
Austin, TX

For more info and to register go to

www.eventbrite.com and search for **2018 Austin Area Beekeeping Seminar**

Fantastic topics from management to business to foraging but hurry, registration closes on January 24. Don't miss out!



Do you plan to order bees this year? You will find a membership form in this newsletter in case you need to pay your 2018 dues plus a bee order blank below. One must be a current 2018 member to qualify to order bees and/or queens.

The club has made arrangements for our WCABA members to get the 5 frame nucs of bees with laying queen (Queen NOT marked or clipped) from Merrimack Valley Apiaries again this year. The nuc will cost \$150.00 to be paid at the time you place your order. Also, if a queen is needed for replacing an old queen or for splitting a hive, her price will be \$32.00, marked and clipped from Bee Weaver Apiaries. Tentatively, the nucs and queens will be scheduled for pick up at the Bost Farm near Georgetown the middle to latter part of April. The firm dates will be published when they are communicated. The deadline for ordering packages of bees is February 28th .

Jimmie Oakley is the Bee/Queen order facilitator: jimmie.oakley@gmail.com

W.C.A.B.A. Club 5-Frame Nuc & Queen Order Form - 2018

Name _____

Address _____ City/State/Zip _____

Phone _____ e-mail: _____

I want to order: ***Are you a current member? [] Yes!*** please print

No. _____ **5 Frame Nuc** (Based on group order of 100 nucs) **\$150.00/ Nuc.**

Nuc with three frames brood, mated queen, "NOT" marked or clipped.

No. _____ **Honey Bee Queen** (Based on group order of 100) **\$32.00/ Queen**

BeeWeaver marked & clipped Queen from mite tolerant and virus resistant stock.

How will you pay? CASH or Check # _____

TOTAL \$ AMT

Mail remittance to:

Check Preferred

OF ORDER

--

WCABA Order/ Jimmie Oakley - 425 Sapphire Lane, Jarrell, TX 76537

Nuc order **deadline:** Must be postmarked by February 28, 2018, or while supplies last..

Limit 10 nucs per family. No individual resale or ownership transfer permitted on nucs once ordered.

All secondary transactions and scheduling must come through the club for tracking & delivery.

Special Instructions:

Busy Bee

Busy Bee Beekeeping Supplies
www.busybeesupplies.com
254-793-9459



We carry all your beekeeping
needs, from beekeeping
books to honey extracting
and everything in between.

Helping beekeeper's raise happy, healthy, busy, bees.

www.busybeesupplies.com

(254) 793-9459

admin@busybeesupplies.com

Located in Florence, TX

(Between Georgetown, TX and Killeen, TX on HWY

Store Hours

Mon: 9am—4pm
Tue: 9am—4pm
Wed: CLOSED
Thurs.: 9am—4pm
Fri: 9am—4pm
Sat: 9am—12pm
Sun: CLOSED


Spring Order Instructions

[Shop For More Items](#)

Coupon Code

WCABA2018

Your Cart

ITEM DESCRIPTION	EACH	QTY	TOTAL
 10 Frame - Hive Kit #1 - Assembled	\$107.95	<input type="text" value="1"/>	\$107.95

Click  to remove an item from your cart [Empty My Entire Cart](#)

Enter Coupon Code: [Apply](#)

[Recalculate](#)

CALCULATE SHIPPING (optional)

Shipping Rates:
(change my address)

PLEASE SELECT (If your shipping seems high, please call us after you place your order) ▼
PLEASE SELECT (If your shipping seems high, please call us after you place your order)
In-store Pickup
WCABA Club Order - Best Farm Delivery
FedEx Home Delivery® \$31.47
FedEx 2Day® \$73.02
USPS Priority Mail \$36.50

Step 1

Enter Coupon Code
Insert: **WCABA2018** for the
spring order discount of 10%.

Step 2

Select Shipping Option

You can either have your order shipped to you or you can pick your order up from our Florence location. *If you choose to pick your order up, we will call you when it is ready.

Step 3

Checkout

Press Proceed To Checkout where you will complete the order process.

[Proceed To Checkout](#)

[PayPal Checkout](#)

[PayPal CREDIT](#)

If you have any issues or question with the ordering process, please do not hesitate to call us. Please note: We get a large number of calls during bee season and our phone lines may be busy, so please leave a message and we will call you back as soon as possible. (254) 793-9459



Busy Bee Beekeeping Supplies

Hive Options Comparison List

Option #1 (Minimum Requirements)			
Qty	Item #	Description	Price
1	WW-365	Migratory Top	\$12.75
1	KD-800	10F Deep Hive Body	\$16.75
1	WW-690	10F Screened Bottom Board	\$28.95
1	FR-821	GT/GB Frames - Unassembled - Deep (10pk)	\$13.50
1	FN-710	Plastic Foundation Blk - Deep (Cs 10)	\$13.95
1	FD-100WD	Wooden Entrance Feeder	\$6.95
1	CL-100	Square Folding Veil w/Elastic	\$14.95
1	CL-130	Plastic Helmet	\$10.95
1	CL-605	Leather Gloves	\$12.95
1	HD-584	Standard Hive Tool	\$4.95
1	HD-660	Bee Brush	\$5.95
1	HD-556	Standard Smoker	\$39.50
1	BM-847	First Lessons in Beekeeping	\$13.95

Subtotal	\$196.05
8.25% Tax	\$16.17
Total	\$212.22

Plan Ahead!

While you are busy ordering your bees,
be sure to have everything you need to get them off to a
great start when they arrive!

*Also available are complete hive kits, unassembled, assembled, and even painted at additional cost. Ask April (254)793-9459 at Busy Bee for more details.



Apply for the Ed Wolfe-Robert Bost Memorial Scholarship

Deadline: February 10, 2018

The deadline is fast approaching, so if you know of a school age boy or girl who is interested in learning about bees and beekeeping, please encourage him/her to apply for The Ed Wolfe-Robert Bost Memorial Scholarship. This is an essay contest administered by the Williamson County Area Beekeepers Association (WCABA). Scholarships are presented annually to contest winners and are intended to promote and encourage area youth to become knowledgeable and interested in honey bees and honey production. Scholarship submissions must be post-marked by February 10th, 2018, and will be awarded at the March 22nd WCABA meeting. Just ask any Ed Wolfe-Robert Bost Memorial Scholarship recipient about their experience and you will get an ear full of stories about how wonderful and life changing this was for them.



Interested parties should contact Jimmie Oakley, Scholarship Chairman at: jimmie.oakley@gmail.com to get an application, or go online at wcaba.org and check out Opportunities – Scholarship.

ATTENTION ALL 4-H Members...

It is time for the 2018 Texas 4-H beekeeping essay contest. The topic this year is “What’s So Super About the Super Organism in the Honey Bee?” Cash and honey bee related book prizes, and the chance to advance to the national competition are at stake as well as everything you can learn while researching.

For more information go to <http://texas4-h.tamu.edu> but don’t delay. The deadline is Feb. 18, 2018. WCABA is proud of our members Callie Herring and Paul Exley who placed 1st and 2nd at the state level in past competition.

Don’t miss out on these upcoming events...

- * *WCABA meeting – January 25*
- * *Austin Area Beekeeping School – January 27*
- * *Order your bees!! November 1 – February 28 (or until cap is met)*

Refer to the order form in THIS newsletter



Just For Fun From Barbi Rose Your WCABA Librarian

Test your Word Search skills with “In the Hive”.

All words are associated with things you may find inside a hive.

You may use the word list or cover it for a challenge.

The answers will be available at the library table during the January meeting

E	H	W	Q	P	H	E	R	O	M	O	N	E	S	M
M	N	I	Q	U	L	D	W	A	X	M	O	T	H	I
E	E	B	V	U	E	A	R	A	K	N	E	E	S	T
R	C	E	B	E	E	E	R	O	X	D	I	X	X	E
G	T	E	C	H	B	E	N	V	N	Q	M	P	A	S
E	A	S	M	A	E	E	N	L	A	E	A	U	W	I
V	R	P	R	G	P	C	E	C	F	E	G	P	S	L
I	V	A	A	B	L	P	E	T	E	R	O	A	E	O
H	R	C	W	U	N	C	E	R	L	L	A	E	E	P
E	E	E	S	R	E	D	A	D	L	E	L	M	B	O
E	D	T	S	R	O	B	B	E	R	S	S	Y	E	R
B	E	E	I	C	P	P	N	Y	E	N	O	H	G	P
R	E	W	R	O	Y	A	L	J	E	L	L	Y	G	U
B	F	D	T	M	G	W	O	R	K	E	R	N	S	C
D	O	O	R	B	N	O	I	T	A	D	N	U	O	F

beehive

bees

bee space

bees wax

brood

burr comb

cage

capped

cluster

drone

eggs

emerge

feeder

foundation

frame

hive beetles

honey

imago

knees

larvae

mites

nectar

pheromones

pollen

propolis

pupae

queen

queen cell

robbers

royal jelly

swarm

top bar

wax

wax moth

wire

worker



Membership Application
Williamson County Area Beekeepers Association
Dues \$15.00 per year - Individual or Family Membership

New Member / Renewing Member (circle one)

Date: _____

Name: _____

Amount: _____

Address: _____

City / State / Zip: _____

Phone: (_____) _____

Email: _____

Please print, fill out, and bring to club meeting or mail with check to:

Membership

Shirley Doggett, 400 County Road 440,
Thrall, TX 76578

Have you ordered your bees???
Order form is on page 6!

****Remember, you must be a current member of WCABA to order with the club****



Oakley

Honey Bee Removal

Austin: (512)981-9216

Waco/Temple: (254) 340-4415

beekeepers@livehoneybeeremoval.com

www.LiveHoneyBeeRemoval.com

Randy Oakley

Live Honey Bee Removal
& Relocation Specialists
with 35 years of
Beekeeping Experience

Live Honey Bee:

- Removal
- Relocation
- Repair



Oakley
Family Apiaries



- Local Honey Bees
- Beekeeping Advice
- Beekeeping Supplies

Randy & Amy Oakley

(254) 307-2337

OakleyBees@gmail.com

OakleyFamilyApiaries.com



**See us at the January Meeting for all your
Spring Beekeeping Supplies**

Williamson County Area Beekeepers Association * 4355 County Road 110, Georgetown, Texas 78626*<http://www.wcaba.org>*email: info@wcaba.org

WCABA
4355 County Road 110
Georgetown, Tx 78626